

CAB50 Additional Seal Locations

If encountering an Eco-Choice CAB50 with low vacuum, additional sealing of the ashpan area, as well as air-shutter adjustment may be needed. The figures below show where and how to seal these areas and an example of air shutter adjustment. In CAB50 units manufactured after 05-20-2013 the areas at the back of the ashpan will be sealed from the factory, only the pedestal bolt holes may need to be sealed.

Back Side of Ashpan Area

The target areas to be sealed at the back side of the ashpan are shown circled in red in Fig. 1*

The gaps from the ashpan area on the left and right sides (from behind the unit) can be seen in Fig. 2

Both of these areas are to be completely sealed with high-temp RTV silicone, as seen in Fig. 3.

*The unit in fig. 1 is shown without the hopper or back shield in place for reference only. The hopper and back shield do not need to be removed to perform this repair.

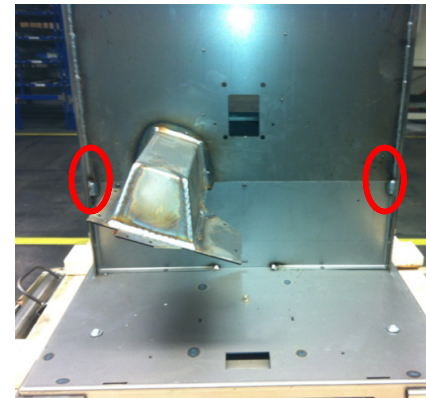


Figure 1

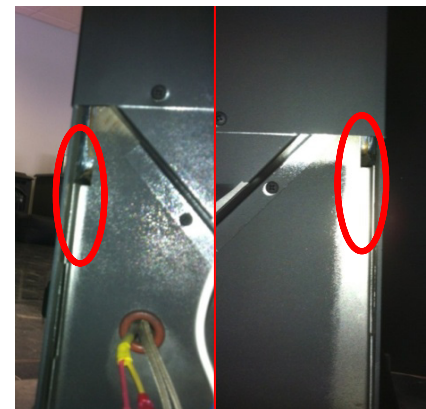


Figure 2

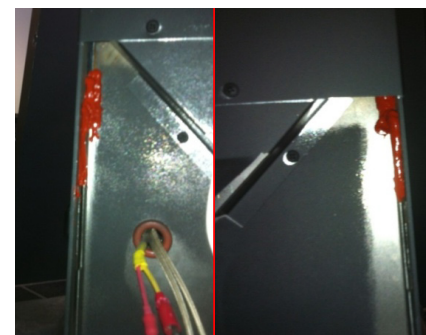


Figure 3

Continue on Reverse

CAB50 Additional Seal Locations

Inside Ashpan Area

The hole locations from the pallet securing bolts can be seen in Fig. 4.

Both of these holes are to be covered with high-temp aluminum stove pipe tape, as seen in Fig. 5.

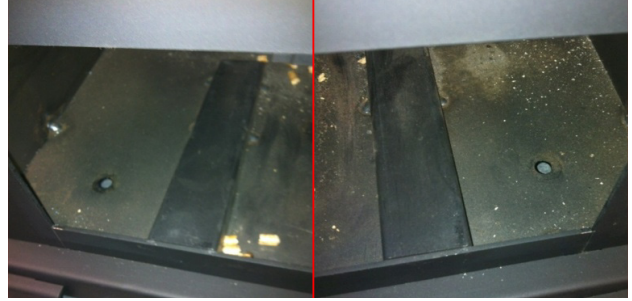


Figure 4



Figure 5

Air Shutter Adjustment (Fig. 6)

To increase vacuum and help to tune out some “rumbling”, the air shutter in the ashpan can be closed down. Once closed, small adjustments are recommended to maintain correct flame appearance and flame height.



Figure 6