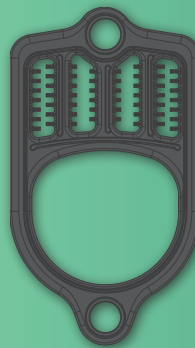




## FREEPORT 2 FWZ SERIES

3-PASS OIL-FIRED HOT WATER BOILER

- ♦ Cast iron heat exchanger
- ♦ Swing door with burner disconnect plug for easy access to all heating surfaces through the front
- ♦ Standard control features simple thermal purge function for increased efficiency
- ♦ Second zone operations available for:
  - Heat
  - Domestic hot water using an indirect water heater like the Mega-Stor®
- ♦ Energy Star® rated with efficiencies up to 87.1%



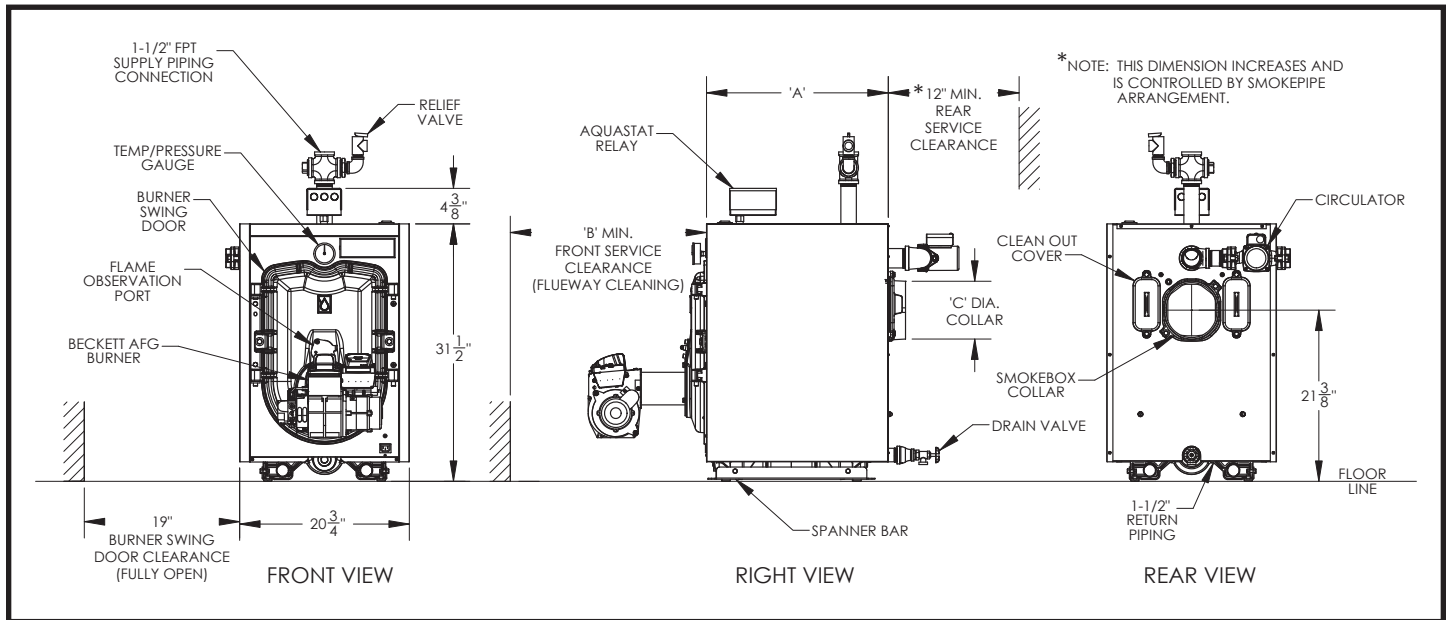
The FWZ boiler uses a 3-pass heat exchanger, designed to maximize heat transfer from flue gases to the boiler water, and to minimize the amount of cast iron and water that must be heated. This is achieved by circulating the hot flue gases through the heat exchanger three times, resulting in a more efficient boiler.

See back side for piping configurations.



# FWZ SERIES - FREEPORT 2

## TECHNICAL SPECIFICATIONS



MODEL	BURNER INPUT		HEATING CAPACITY (MBH)	AHRI NET RATING (MBH)	AFUE %	DIMENSIONS (INCHES)			WATER CONTENT (GAL)	HEAT TRANSFER SURFACE AREA (SQ FT)	SHIPPING WEIGHT (LBS)
	GPH	MBH				"A"	"B"	"C"			
FWZ060	0.60	84	73	63	86.0	16-1/4	24	5	7.70	13.29	430
FWZ080	0.80	112	97	84	86.3	16-1/4	24	5	7.70	13.29	430
FWZ100	1.00	140	123	107	87.0	22-1/4	24	6	11.08	20.29	545
FWZ130	1.30	182	160	139	87.1	28-1/4	30	6	14.46	27.29	658
FWZ160	1.60	222	197	171	87.1	34-1/4	36	7	17.84	34.29	771

1. Burner capacity rating, GPH, is based on #2 fuel oil with a Gross Heating Value equal to 140,000 BTU/gal.
2. Net Ratings are based on piping and pick-up allowances of 1.15.
3. Maximum working pressure, water - 50 PSI.

All residential cast iron water boilers include a full one year warranty. A limited, lifetime warranty is provided for the cast iron heat exchanger. A 5-year and a 10-year extended warranty covering parts and labor are also available. Visit [CrownBoiler.com](http://CrownBoiler.com) for complete details.



The Mega-Stor® indirect water heater utilizes the energy created by your boiler to produce abundant hot water for your home. Mega-Stor water heaters come in a variety of sizes from 26 to 119 gallons to meet a multitude of residential and commercial needs.

### ADDITIONAL FEATURES/BENEFITS

- Beckett AFG burner standard; Riello burners optional on most sizes
- Burners packaged separately for easier handling
- Sparge tube standard
- Optional 120V low water cut-off kit available
- Optional control console is easily installed in the field, allowing for these additional functions:
  - Outdoor reset
  - Low water cut-off (manual or auto-reset)
  - Second limit (manual or auto-reset)
  - Touch screen display for simple adjustments and diagnostics

Specifications are subject to change without notice.



[www.crownboiler.com](http://www.crownboiler.com) | Philadelphia PA

FWZ - 9/12  
PN 980261 - RO