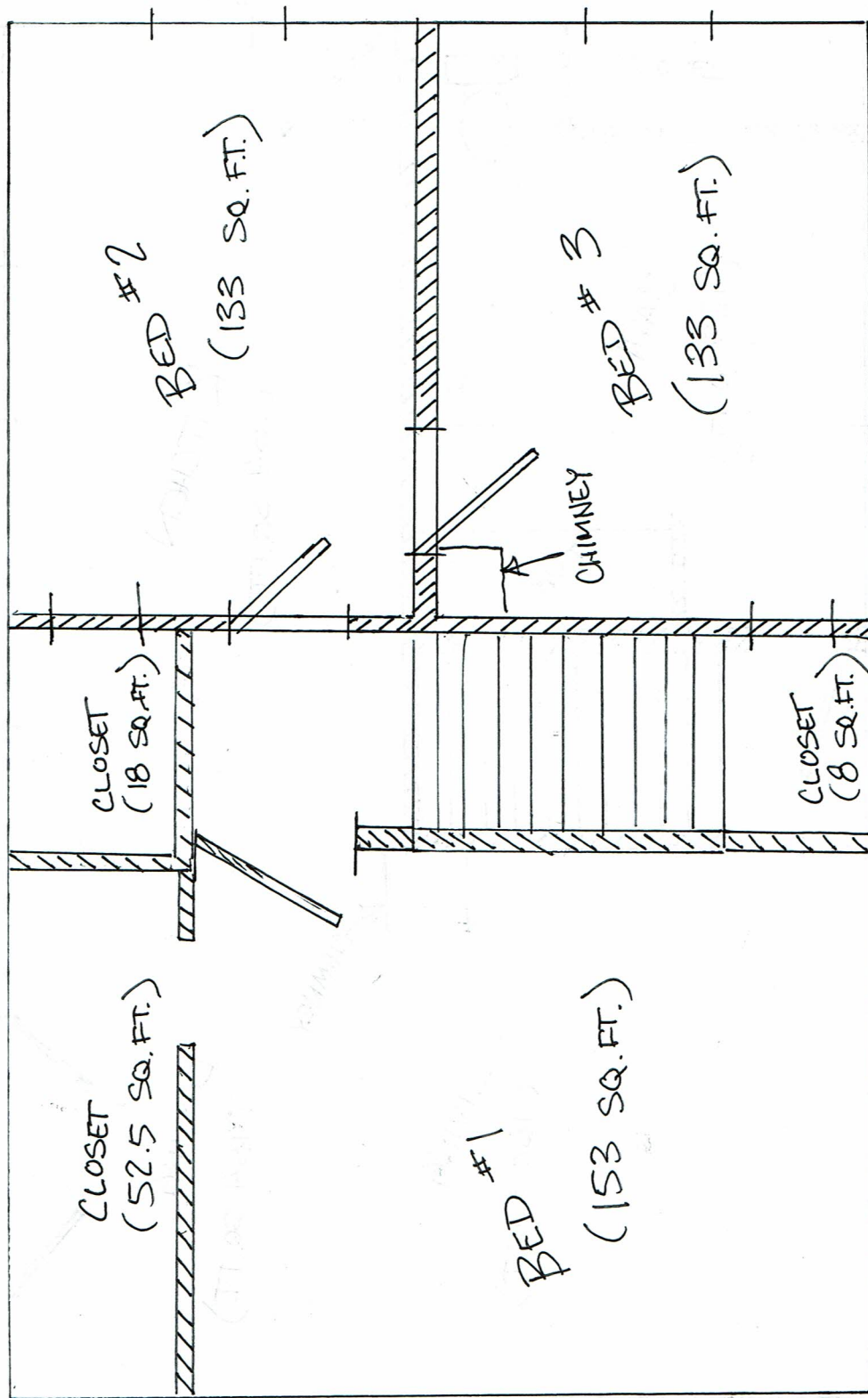


1ST FLOOR

CEILING HEIGHT 7' 10"

STAIR CASE SQ. FT. = 66
 ROOM SQ. FT. = 616
 TOTAL SQ. FT. = 682



2ND FLOOR

CEILING HEIGHT 6' 10"

BEDROOM SQ. FT. = 419 SQ. FT.

TOTAL SQ. FT. = 497.5 SQ. FT.