

Installation and operating instruction for the Jøtul boxstove no. 118 B

This installation and operating instruction is divided in five parts:

1. General information
2. Hazards connected to the use of closed fireplaces
3. Installation
4. Operation of the stove
5. Sweeping and maintenance



THIS SYMBOL ON THE NAMEPLATE OF THE PRODUCT MEANS IT IS LISTED BY UNDERWRITERS LABORATORIES INC. ONLY THOSE PRODUCTS BEARING THIS LISTING MARK ARE CONSIDERED AS COVERED BY UL'S LISTING AND FOLLOW-UP SERVICE.

SAFETY NOTICE

IF THIS FIREPLACE STOVE IS NOT PROPERLY INSTALLED, A HOUSE FIRE MAY RESULT. FOR YOUR SAFETY, FOLLOW THE INSTALLATION DIRECTIONS. CONTACT LOCAL BUILDING OR FIRE OFFICIALS ABOUT RESTRICTIONS AND INSTALLATION INSPECTION REQUIREMENTS IN YOUR AREA.



Aksjeselskapet Jøtul
Postboks 6206 · ET, Oslo 6
Norway

1. GENERAL INFORMATION

- 1.1. Jøtul's boxstove 118 B is a cast iron heater, designed for use of wood as fuel. Logs up to a length of appr. 60 cm (24") can be utilized, and it can be filled with appr. 11 kg (25 lb) of wood.
- 1.2. Jøtul's woodstove 118 B has front combustion, i.e. the wood is ignited in front and burns slowly towards the rear, thus avoiding that all the wood will burn at the same time. The wood will burn longer and the heater will radiate an even heat.
- 1.3. When installing, operating and maintaining this heater, please follow the guide-lines given in these instructions. Save these instructions and keep them so that they are always available for everybody using the heater.

2. HAZARDS CONNECTED TO THE USE OF CLOSED ROOM HEATERS

- 2.1. Any use of fire, also in connection with closed room heaters represent a certain danger.
- 2.2. With intence firing, the temperature of the cast iron can exceed 500°C (932°F). The following factors must always be considered.
 - a. The heater should not be installed in parts of the room where there is a lot of traffic.
 - b. Loose inflammable material must be kept in a safe disstance from the heater, i.e. minimum 90 cm (36").
 - c. Children must be taught that the heater is hot and must not be touched.
 - d. Clothes must not be dried over the heater. They can fall down and be ignited.
 - e. The heater must be installed in accordance with the local regulations, and according to the instructions given by Jøtul Inc.
 - f. The heater must be used and maintained in accordance with these instructions.
- 2.3. Never use the heater if there are combustibile gases in the room.
- 2.4. Poisonous gases can come out into the room if for example the ventilation system creates a low pressure in the room where the heater is placed.
- 2.5. Make sure that sparks and embers don't get out of the heater when the door is opened.
- 2.6. Be aware that even if the ashes look cold, there might still be some burning embers left. Avoid placing the ashes close to combustibile materials before you are positive that all burning embers are out.
- 2.7. Do not use the heater with an open door. The heater can then be overheated.
- 2.8. The heater, chimney connector and chimney must be inspected and cleaned frequently, i.e. at least once a year.
- 2.9. Creosote — formation and need for removal.

When wood is burned slowly, it produces acetic and pyroligneous acids, which combine with expelled moisture to form creosote. The creosote vapors condense in the relatively cool chimney flue of a slow-burning fire. As a result, creosote residue accumulates on the flue lining. When ignited this creosote makes an extremely hot fire.

The chimney connector and chimney should be inspected frequently during the heating season to determine if a creosote build-up has occurred.

If creosote has accumulated it should be removed to reduce the risk of a chimney fire. Experienced chimney servicing personnel should be consulted.
- 2.10. Utilize wood as the only fuel, and never liquid fuels.

Liquid fuel utilized in a heater for solid fuel can result in an explosion and fire.

Never use gasoline, gasoline-type lantern fuel, kerosene, charcoal lighter fluid, or similar liquids to start or «freshen up» a fire in this heater. Keep all such liquids well away from the heater while it is in use.

Never use or store flammable liquids, especially gasoline, in the vicinity of the heater.

3. INSTALLATION

- Please follow these installation instructions carefully. Check and execute each step before you proceed.
- 3.1. Check the local rules.

All installations of Jøtul's boxstove no. 118 B must be according to the local regulations and as stated in these instructions. Also refer to NFPA publication no. 211 for Chimneys, Fireplaces and Vents, 1977.

For further information on using your heater safely, obtain a copy of the National Protection Association publication «Using coal and wood stoves safely», NFPA No. HS-8-1974.

The address of the NFPA is 470 Atlantic Avenue, Boston, MA 02210.
 - 3.2. Inspect your chimney.

The heater can be connected to masonry chimneys for residential type appliances, or Underwriters Laboratories Inc. listed metal chimney for residential type and building heating appliances. Single wall metal chimneys shall not be used inside 1- and 2-family dwellings. The inside dimension of a square masonry chimney should be minimum 6 by 6 inch. For a circular listed insulated chimney a diameter of 6 inch. is recommended. The minimum height of the chimney should be 10 feet.
 - 3.3. Determine where you want to install the heater.

The heater can be installed in different ways, but the installation must be in accordance with the UL-listing. Fig. 1 shows the listed installations and the clearances that can be used.
 - 3.4. Make a floor protector.

The heater shall be placed on a floor protector not less than 3/8 inches thick of asbestos millboard or equivalent.

The floor protector shall extend at least 16 inches in front, and at least 8 inches to each side of and beyond the back of the heater. See Fig. 1.

If the floor projection of the chimney connector is extending beyond the sides of the heater, the floor protector should be expanded in that direction in its full width to cover the floor at least 2 in. beyond the projected area.

If possible, the floor protector should cover the floor in this direction just up to the wall.

The floor protector may be placed on the sub or finish flooring, whether the flooring is combustibile or not. The floor protector shall be readily distinguishable from the surrounding floor.
 - 3.5. Assemble the heater.

Put the four legs on with screws and washers which are delivered with the unit. There is one leg in each corner of the heater.

Check that the baffelplate and burnplates are in position. Screw on the knob to the door.

Place your heater on the floor protector according to the clearances given in the previous section.
 - 3.6. Install the chimney connector.

With the heater in place you can now determine the

path of the chimney connector. The connector shall be used to connect the heater to the chimney. The connector shall be made of noncombustible corrosion resistant material such as steel or refractory masonry. If a steel connector is to be used, it should be 24 gauge or thicker. A connector shall be as short and straight as possible.

A 6" chimney connector should be used. The heater is delivered with a 5" — 6" adapter which may be attached to the smoke outlet.

The adapter is secured to the smoke outlet by a 6 mm screw which is delivered with the heater.

A connector to a masonry chimney shall extend through the wall to the inner face or liner, but not beyond, and shall be firmly cemented to masonry. A thimble must be used to facilitate removal of the chimney connector for cleaning, in which case the thimble shall be permanently cemented in place with high-temperature cement.

A chimney connector shall not pass through any floor or ceiling, nor through a fire wall or fire partition.

3.7. Before building a fire.

With the chimney connector properly secured to the smoke outlet, your Jøtul heater No. 118 B is ready for use. Please read the following section carefully upon using the heater.

4. OPERATION OF THE ROOM HEATER

4.1. Use always wood as fuel. The wood should be air dried for at least 4 — 6 months.

Kindle some sticks at the front of the heater, then put in some full-length logs. At the beginning see that the draft is sufficient, and then regulate it down towards the combustion desired.

The fire will now slowly spread inwards. When the wood has turned to glowing, the air intake should be reduced. The wood then burns rather like coke or charcoal.

In place of constant rekindling, the heater should be kept continuously burning day and night on larger logs. When the wood has burnt almost completely and only the necessary coals remain for continued burning, these are poked to the front using a poker. The heater is then refilled. The draft is increased, and then regulated down to the combustion desired.

4.2. Enamelled heaters must not be fired to the extent that they assume a red glow. The enamel may then be damaged.

4.3. During the first few times you use a new heater, the heater may become somewhat damp. In order to prevent this condensate from running down the face of the heater, open the door slightly during the first firing. As soon as the heater is warm, this condensate will evaporate and the door may be closed.

On enamelled heaters, this condensate should be wiped off IMMEDIATELY as it may permanently stain or pit the surface.

5. SWEEPING AND MAINTENANCE

5.1. When wood burns, soot and creosote may develop and could, together with other incombustible particles settle in the chimney and the chimney connector. If this deposit increases it will be necessary to have it removed. This ought to be done by sweeping the chimney and chimney connector regularly. How often depends on the use of the heater. As a rule, the chimney and the chimney connector should be swept at least once a year.

If the chimney and the chimney connector is not swept regularly, a chimney fire may develop. If a fire should erupt, the chimney should be inspected by professionals before it is taken into use again.

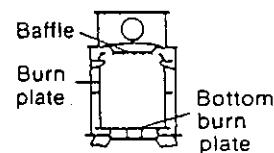
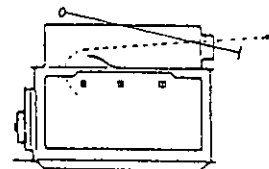
5.2. The room heater may burn "continuously" (day and night), even on small loads. Should pitch develop during such continuous burning, the heater should be fired intensely at regular intervals.

This repeated a few days in succession will burn away possible pitch.

5.3. To give the maximum amount of heat, the heater and the chimney connector should be swept regularly. Figure 2 illustrates how the heater should be swept. By removing the top lid sweeping can easily be carried out everywhere in the heater.

When sweeping the chimney connector it may be convenient to disconnect the heater. The chimney connector must be cleaned in its full length to assure a safe removal of all soot and creosote which have condensed on the inner surfaces.

After sweeping it is important to assure that the baffle and the burnplates are replaced as in figure 2. The burnplate increases the temperature during combustion and protects the side plates. The baffle guides the hot gases in such a way that maximum heat dissipation is attained. A bottle of black Senotherm is enclosed for unenamelled heaters. It may be used for patching up possible scratches in the varnish.



118B

Figure 2

Be sure to install the chimney connector properly after sweeping and secure it with the screw.

5.4. Disposal of ashes

Ashes should be placed in a metal container with a tight fitting lid. The closed container of ashes should be placed on a noncombustible floor or on the ground, well away from all combustible materials, pending final disposal. If the ashes are disposed of by burial in soil or otherwise locally dispersed, they should be retained in the closed container until all cinders have thoroughly cooled.

5.5. Maintenance






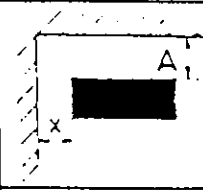


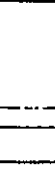


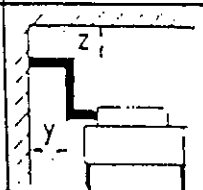
We recommend that you inspect your heater whenever sweeping is performed. Check all visible surfaces for cracks. Inspect the joints for visible leaks and check the gasket in the door and on the top lid. Loose gaskets may be fixed by applying some water glass (Sodium Silicate) in the slot.

If a mechanical failure is disclosed, please contact your local dealer.

A/S JØTUL, OSLO, NORWAY

JØTUL WOOD STOVE NO. 118 B

CLEARANCES:

FROM	Heater					
TO		X	28"	28"	28"	28"
		A	36"	36"	40"	36"
FROM	Chimney connector					
TO		Y	20"	20"	32"	
		Z	18"			

SIZE OF HEARTH EXTENSION

The hearth extension should be made of $\frac{3}{8}$ " asbestos millboard or equivalent

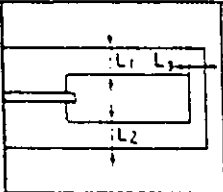
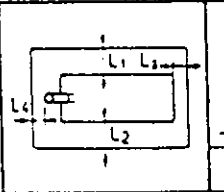
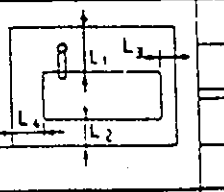
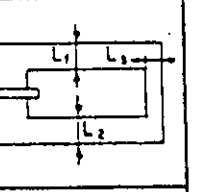
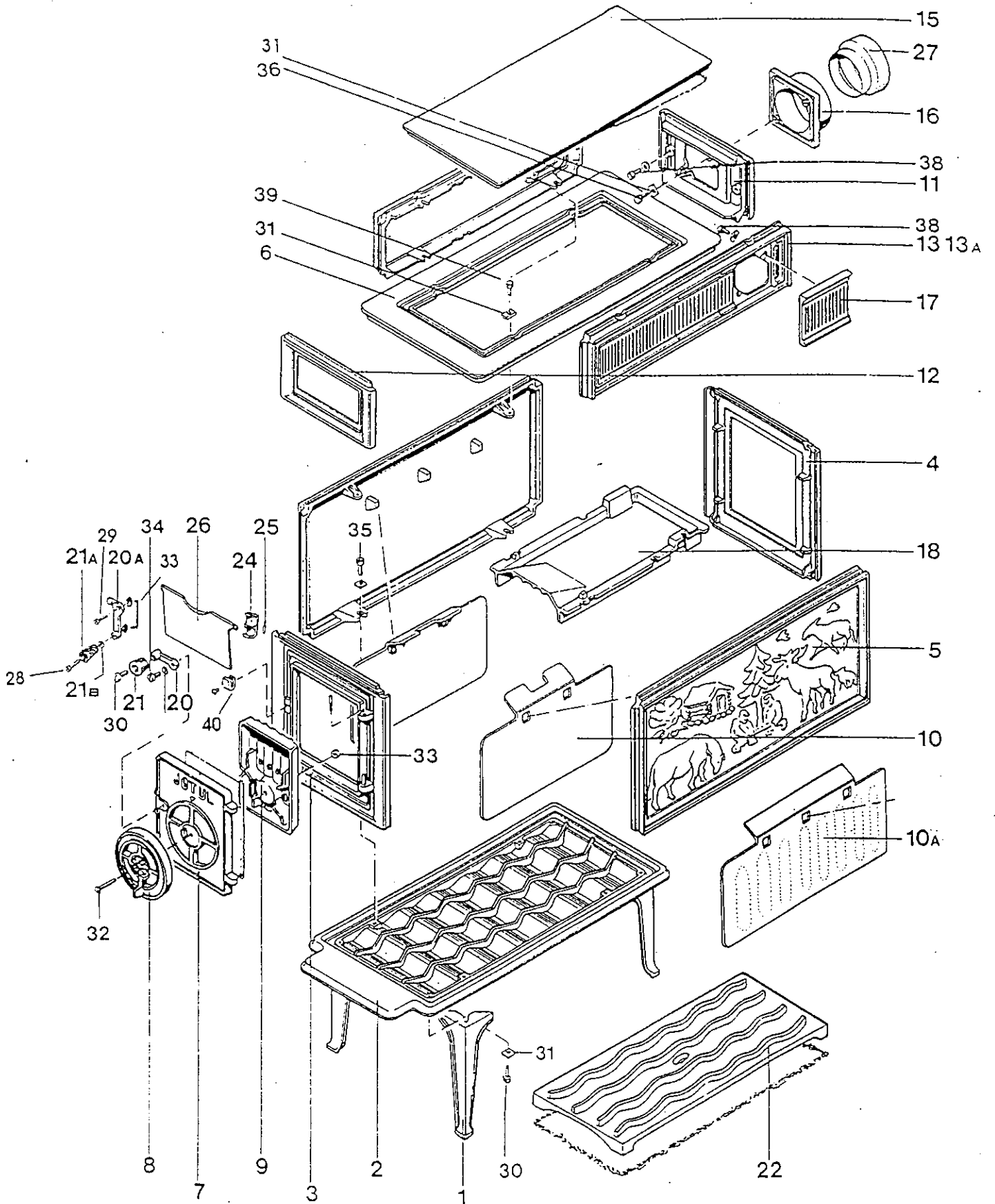
					
	L ₁	8"	8"	16"	8"
	L ₂	8"	8"	8"	8"
	L ₃	16"	16"	16"	16"
	L ₄	to wall	2"	8"	to wall
Total width		30"	30"	38"	30"
Total length		Min. 73"	55"	61"	Min. 73"

Fig.1 Clearances and Hearth Extension Size



SCH#	DESCRIPTION	COLOR	UL	PART #
01	Leg	Blk		100817
		Grn		100382
		Red		101727
02	Bottom plate	Blk		101212
			UL	101597
		Grn		100734
			UL	101598
03	Lower front plate	Red	UL	101599
		Blk		101213
			UL	151166
04	Lower back plate	Grn		100735
			UL	151167
		Red	UL	151168
		Blk		101214
05	Side Plate		UL	101555
		Grn		100736
			UL	101556
		Red	UL	101554
06	Shoulder plate	Blk		101215
			UL	101536
		Grn		100737
			UL	101537
07	Door	Red	UL	101538
		Blk		101216
			UL	101465
08	Draft regulator	Grn		100738
			UL	101478
		Red	UL	101900
09	Air flow plate	Blk		101199
		Grn		100383
		Red		101737
10	Side burn plate	Blk		100608
		Grn		100387
		Red		101725
10A	Side burn plate		UL	100336
				100739
			UL	101517
11	Upper back plate	Blk		101217
			UL	101466
		Grn		100740
			UL	101479
12	Upper front plate	Red	UL	101480
		Blk		101218
			UL	101625
		Grn		100741
13	Upper front plate		UL	101626
		Red		101628

SCH#	DESCRIPTION	COLOR	UL	PART #
13	Upper left side plate	Blk		101220
	Upper right side plate			101219
	Upper left side plate	Grn		100743
	Upper right side plate			100742
13A	Upper side plate (L or R)	Blk	UL	101468
		Grn	UL	101481
		Red	UL	101482
15	Top plate	Blk		101221
			UL	101623
		Grn		100744
			UL	101624
16	Smoke outlet	Red	UL	101621
		Blk		101222
			UL	101612
17	Smoke outlet cover	Grn		100745
			UL	101613
		Red	UL	101614
		Blk		101223
18	Top baffle plate		UL	101472
		Grn		100746
			UL	101485
20	Cast iron door handle	Red	UL	101486
				100747
				101085
20A	Cast iron door handle		UL	101601
21	Bakelite knob			120015
21A	Wooden knob		UL	124852
21B	Insulated washer		UL	124853
22	Bottom burn plate		UL	101516
24	Hinge for flameout plate		UL	101618
25	Hinge pin		UL	120002
26	Flameout plate		UL	101619
27	125mm to 6" adaptor		UL	124821
28	M8 x 80 cheese head screw			9996
29	M8 x 25 cheese head screw			9990
30	M6 x 25 cheese head screw			9982
31	M6 washer			9975
32	M8 x 35 flat head screw			9948
33	M8 hex nut			9931
34	M8 x 20 cheese head screw			9989
35	M6 x 20 hex head screw			9904
36	M6 x 16 hex head screw			9903
38	M6 x 12 hex head screw			9902
39	M6 x 40 hex head screw			9907
40	Hook for handle			120013